

Article

Not peer-reviewed version

---

# Rye Production under Acid Soils and Drought Conditions: An Alternative for the Sustainability of High Andean Livestock Farming in Peru

---

[William Leoncio Carrasco-Chilón](#), [Wuesley Yusmein Alvarez-García](#)<sup>\*</sup>, Marieta Eliana Cervantes-Peralta, Carlos Quilcate Pairazaman, Héctor Vladimir Vásquez-Pérez

Posted Date: 5 July 2023

doi: 10.20944/preprints202307.0275.v1

Keywords: Crop residues; animal feed; drought; *Secale cereale* L.; Fertilization



Preprints.org is a free multidiscipline platform providing preprint service that is dedicated to making early versions of research outputs permanently available and citable. Preprints posted at Preprints.org appear in Web of Science, Crossref, Google Scholar, Scilit, Europe PMC.

Copyright: This is an open access article distributed under the Creative Commons Attribution License which permits unrestricted use, distribution, and reproduction in any medium, provided the original work is properly cited.

Article

# Rye Production under Acid Soils and Drought Conditions: An Alternative for the Sustainability of High Andean Livestock Farming in Peru

William L. Carrasco Chilón <sup>1</sup>, Wuesley Y. Alvarez-García <sup>1,\*</sup>, Marieta E. Cervantes Peralta <sup>2</sup>, Carlos Quilcate <sup>3</sup> and Hector V. Vásquez <sup>4</sup>

<sup>1</sup> Programa Nacional de Pastos y Forrajes, Estación Experimental de Baños del Inca, Instituto Nacional de Innovación Agraria (INIA), Jr. Wiracocha S/N, Baños del Inca, Cajamarca; wcarrasco@inia.gob.pe

<sup>2</sup> Laboratorio de Suelos, Aguas y Fertilizantes - LABSAF, Estación Experimental de Baños del Inca, Instituto Nacional de Innovación Agraria (INIA), Jr. Wiracocha S/N, Baños del Inca, Cajamarca; mecervantes0318@gmail.com

<sup>3</sup> Proyecto de Mejoramiento Genético Nacional, Instituto Nacional de Innovación Agraria (INIA)

<sup>4</sup> Facultad de Zootecnia, Agronegocios y Biotecnología; Universidad Nacional Toribio Rodríguez de Mendoza de Amazonas; Chachapoyas – Amazonas; Higos Urco; hvasquez@untrm.edu.pe

\* Correspondence: wuesley.alvarez@hotmail.com

**Abstract:** The rye (*Secale cereale* L.) crop shows a high potential to collaborate in the sustainability of high Andean livestock because it supports the agroclimatic conditions and acid soils in the Peruvian Andes. The production of green forage, hay, and grain of the rye crop in acid soils was studied with the use of different levels of phosphorus and potassium fertilization in four local rye ecotypes (CBI-001, CSM-001, CJS-001, and CCE-001). The green forage yield (FV) ranged from 32.35 to 53.62 t ha<sup>-1</sup>, dry matter from 6.05 to 8.56 t ha<sup>-1</sup>, and hay from 7.0 to 10.36 t ha<sup>-1</sup>; nutritional levels ranged from 9.02 % to 13.56 % protein and 6.50 to 7.75 % ash levels, mainly with differences between ecotypes ( $p < 0.05$ ). No differences existed between fertilization levels for the number of stems per plant, and flowering stems per plant, and grains per ear ( $p > 0.05$ ). Also, CBI-001 and CCE-001 were superior with 1868.4 and 1797.8 kg ha<sup>-1</sup> of grain, respectively ( $p = 0.0072$ ); the use of 60 kg ha of Nitrogen, 120 kg ha<sup>-1</sup> of P<sub>2</sub>O<sub>5</sub> and 80 kg ha<sup>-1</sup> of K<sub>2</sub>O gave higher grain and residue yields. The high nutritional value and yield of the rye ecotypes studied in acid soil conditions and without irrigation can be an alternative for livestock feeding and grain production in the rainy season in the Andes as a dual-purpose crop.

**Keywords:** Crop residues; animal feed; drought; *Secale cereale* L.; Fertilization

## 1. Introduction

Rye (*Secale cereale* L.) is a mainly European cereal; about 75% of the world's production is developed in Russia, Belarus, Poland, Germany, and Ukraine. It has a good overwintering capacity and the highest rate of tolerance to drought stress, saline soils, or soils with the presence of aluminum or so-called acids [1–3]. In addition, it is a crop with multiple uses being a valuable genetic resource due to its ability to produce high yields even when grown under stressful environmental conditions [4]. However, due to its genome's complexity and exogenous nature, rye remains poorly known in some South American regions [5,6]. In Peru, an average rye grain production of 61 tons was reported between 2017 and 2020 [7]; therefore, the local demand is not covered [? ], leaving an agro-productive space of this genetic material for the highland area where climatic conditions are adverse [8] due to the importance that its production is intended for the manufacture of bread and in the growing demand for ethanol and biomethane production as a bioenergy source [9] because of its large amount of bioactive and nutritional components [10]. Also, rye straw is a multipurpose substrate for animal fodder and bedding material [11].

Cultivated rye has some fundamental agronomic traits, including crushing, grain yield, and disease resistance [5]. It forages production in several cuts per sowing [12], indicating the potential as

a dual-purpose crop [2,13], with a significant potential to fix atmospheric C, being a suitable option in agro-ecosystems under acidic pH soil conditions [14]. Likewise, ambient temperature is exceptionally influential on the grain yield of rye, while relative humidity is a secondary factor [15]; also, rainfall (mm) during the vegetation period influences grain yield ( $R^2 = 0.7370 - 0.9047$ ), increasing from 3.0 to 6.4 kg ha<sup>-1</sup> per mm [16]. For forage production, rye yields from 31.7 to 47.6 t ha<sup>-1</sup>, in dry matter biomass from 6.8 to 10.4 t ha<sup>-1</sup> and seed from 2.9 to 5.2 under conditions being a very viable product for whole crop silage [17].

Soil fertility conditions are determinants for forage and grain yield of rye depending on the time of the year, so nitrogen (N) application in spring increases the concentrations of N, phosphorus (P), and potassium (K) in forage biomass linearly. They should avoid N application in autumn to prevent environmental loss and decrease production costs [18]. In monoculture, grain yield stabilizes at 0.8 t ha<sup>-1</sup> without fertilization. However, it can be as high as 1.8 - 1.9 t ha<sup>-1</sup> when 60 N, 120 kg P<sub>2</sub>O<sub>5</sub> and 120 kg K<sub>2</sub>O are added [16], but using NPK with micronutrients (Cu, Zn, Mn) applied separately or in combination increases grain yield from 0.98 t ha<sup>-1</sup> to 1.48 t ha<sup>-1</sup> [19]. By using 90 kg N ha<sup>-1</sup> and 40 kg sulfur S ha<sup>-1</sup>, grain yields of 3.68 t ha<sup>-1</sup> and 3.23 t ha<sup>-1</sup>, respectively, are achieved; it is considered that the addition of S at the rate of 40 kg ha<sup>-1</sup> enhances the effect of N [20]. Intensive fertilization technology can produce 6.67 to 7.0 t ha<sup>-1</sup> of grain with an efficiency of 55.6 to 58.3 kg grain per kg N [21] and can produce up to 10.53 t ha<sup>-1</sup> of grain yield and 8.44 - 14.66 t ha<sup>-1</sup> of forage biomass [22]. At the environmental level, rye, with a rate of 200 kg ha<sup>-1</sup> of N, minimizes the emission of N<sub>2</sub>O into the soil and water. It achieves yields of up to 13 t ha<sup>-1</sup> of hay and more than 1.8 t ha<sup>-1</sup> of protein, making it an alternative crop for arid regions [23].

The application of organic manures and/or in association with fertilizers considerably increases the yield and energy production of rye [24], with the application of foliar fertilizers can reach up to 3.57 t ha<sup>-1</sup> applied at a dose of 8 l ha<sup>-1</sup> at the stage of formation of the first internode of the plant; in addition, grain yield correlates with the number of grains in the ear ( $r = 0.859$ ,  $p < 0.01$ ) and with the weight of thousand grains ( $r = 0.914$ ,  $p < 0.01$ ) [25]. Associated with maize can recover nitrogen and phosphorus levels by 51 and 47 respectively, and increase total forage production by 22% in the rye [26,27]; on the other hand, rye associated with vetch can accumulate N in the soil and increase biomass productivity by 63% and 21% than vetch and rye mono-cultures respectively [28], better grain biomass yield and high carbon accumulation is obtained with soybean [29]; it also promotes N conservation in the soil for the reduction of NO<sub>3</sub>-N loss to water systems and erosion control [30].

In the highlands of Cajamarca, farmers grow rye as a reserve for livestock feed in times of drought and grain production as a dual-purpose crop, mainly in areas above 3000 masl. Therefore, the present research work was carried out to evaluate the productive yield of green forage and hay of four local rye ecotypes and determine the effect of phosphorus and potassium fertilization on grain yield and agronomic parameters of the crop for seed production in the highlands of Cajamarca.

## 2. Materials and Methods

### 2.1. Study location

The first experiment (EXP-1) was installed in the district of La Encañada - Cajamarca to evaluate the forage yield, its chemical composition, and the hay yield of rye. A randomized complete block design was used, blocking the slope of the land (15 - 18%). The four ecotypes of rye and 04 blocks were considered in a total of 16 experimental units of 6 x 5 m each; this experiment was eight months, from December 2021 to August 2022, and in this period, 02 cuts were obtained. The second research (EXP-02) was developed in the district of Namora - Cajamarca, under a block design with the factorial arrangement; the factors were: rye ecotypes and fertilization levels: T1: 50-30-20; T2: 60-60-40; T3: 60-90-60 and T4: 60-120-80 of NPK respectively, having a total of 64 experimental units of 4.0 x 5.70 m each one. The ecotypes used in both experiments were: Ecotype I - Baños del Inca (CBI-001), ecotype II - San Miguel (CSM-001), ecotype III - José Sabogal (CJS-001), ecotype IV - Huasmin-Celendín (CCE-001).

## 2.2. Genetic material and experimental plots

The rye ecotypes were collected in the field from farmers in four provinces in the southern part of the Cajamarca region (Figure 1); each genotype was then coded according to its place of origin. Each rye ecotype collected was evaluated for seed characteristics and taken to the national grass and forage program laboratory for germination and purity tests to determine the homogeneity of the ecotypes (Table 1). The particularity of each local ecotype is because they were obtained from the southern part of the Cajamarca region and are grown at higher altitudes in the highlands. Each genotype selected has been cultivated by the producers in the area for the last ten years. The seed was either from their reserve or their cultivars for the following season (related to the presence of rain). Therefore, it was considered that the ecotype chosen was local in each of the selected localities.

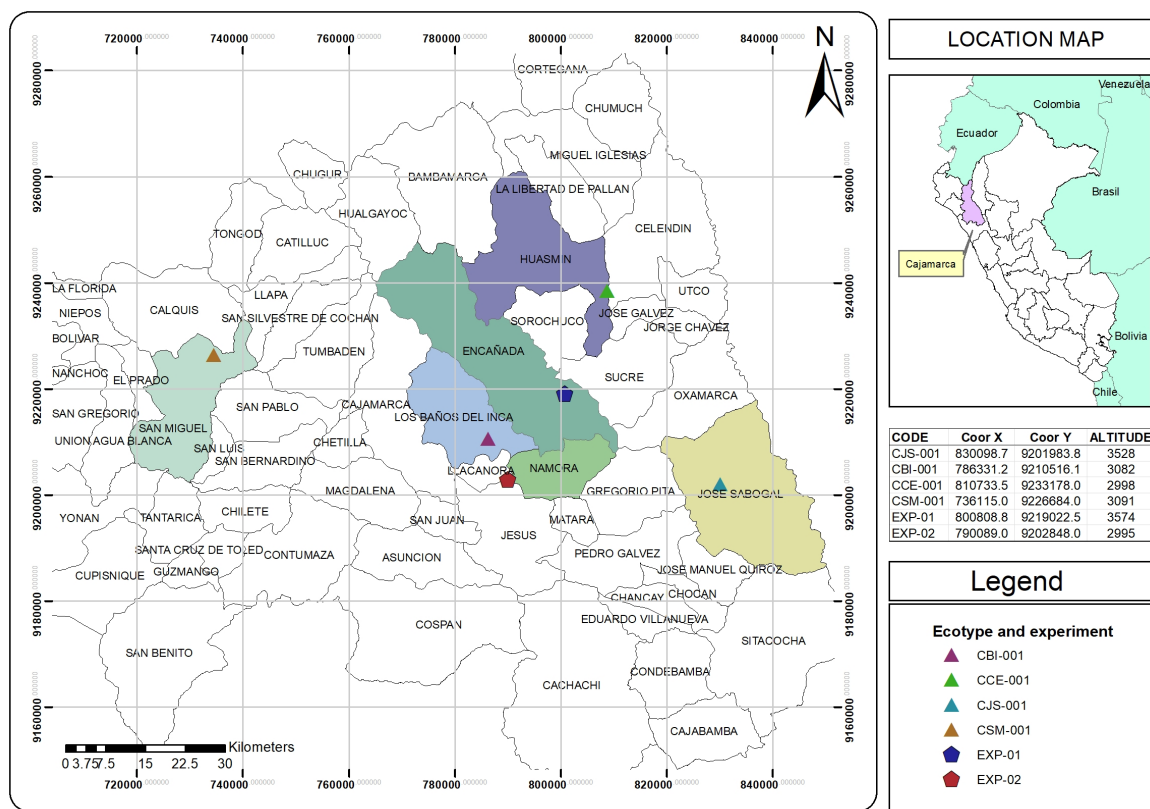


Figure 1. Place of origin of the ecotypes and the development of the experiments.

Table 1. Purity, germination, and sowing density of the four rye ecotypes.

Ecotype	Germination (%)	Purity (%)	Sowing density (kg ha <sup>-1</sup> )
CBI-001	98.7	95	60
CSM-001	96.3	96	60
CJS-001	98.0	95	60
CCE-001	98.7	97	60

The plots of both experiments were sown using tractor tillage with two passes of the harrow to homogenize the surface and desk compact the soil. The appropriate lines were drawn to carry out the correct installation of each experiment. In EXP-01, alleys of one meter were left between treatments and 1.5 meters between blocks. Moreover, in EXP-02, alleyways of 0.8 meters were left between treatments and one meter between blocks.

### 2.3. Soil characteristics and fertilization

Analyses of pH [31], fertility, and the presence of aluminum [32] in the soil was carried out in the two experiments (Table 2). PH and the presence of aluminum were considered for the application of calcium carbonate to alleviate crop stress by aluminum with the adequate cation exchange capacity [33]; the quantities of nutrients used were according to the recommendations of the laboratory of Soil, Water, and Fertilizers - LABSAF-INIA.

**Table 2.** Soil test results and fertilizer use recommendations.

Soil values	EXP-01	EXP-02
pH	4.2	6.2
Aluminium (ppm)	0.1	0
Organic Matter (%)	12.71	1.23
Phosphorus (ppm)	47.7	15.63
Potassium (ppm)	190	290
Recommended dose		
Nitrogen (kg ha <sup>-1</sup> )	50	60
P <sub>2</sub> O <sub>5</sub> (kg ha <sup>-1</sup> )	20	70
K <sub>2</sub> O (kg ha <sup>-1</sup> )	35	35
Cal (t ha <sup>-1</sup> )	0.1	0.0

EXP-01: Experiment 01 - fodder evaluation; EXP-02: Experiment 02 - grain evaluation; pH: hydrogen potential; P<sub>2</sub>O<sub>5</sub>: diphosphorus pentoxide; K<sub>2</sub>O: potassium oxide.

Urea, triple superphosphate, and potassium sulfate were used to cover the needs of nitrogen, phosphorus, and potassium needs, respectively. In EXP-01, the fertilizer doses were applied according to the recommendations in Table 2. For EXP-02, the amounts of nitrogen were the same for all treatments; however, the application doses of phosphorus and potassium were varied to analyze their effect on the grain production parameters. The amounts used were proportional to 50%, 100%, 150%, and 200% about the recommendation for both minerals. Agricultural lime was also applied only to EXP-01 under the recommendations of the analysis.

### 2.4. Sampling and parameter evaluation

In EXP-01, data were taken on the growth and forage yield of the rye cultivar; the number of plants per square meter was determined at 25 days, and the number of tillers per square meter at 54 days was done with a quadrant of one meter made with metal. Also, the plant height was evaluated at 81 days before cutting in centimeters, with a millimetric ruler of 1.5 meters. The height of 10 plants was taken for each experimental unit, according to the evaluation recommendations [34]. Then, three forage samples of one square meter were obtained for each plot to obtain each treatment's green forage yield, dry matter percentage, and biomass yield.

Each 1 kg grass sample was taken the same day of cutting to the laboratory of the National Program of Pastures and Forages of the Experimental Station of Baños del Inca - INIA, where the percentage of dry matter (DM) was analyzed according to AOAC 925.09 [35], crude protein (CP) by Kjeldahl method AOAC, 928.08 [36], neutral detergent fiber (NDF) by the methodology of AOAC 2002. 04 [37,38], acid detergent fiber (ADF) by AOAC methodology 973.18 described by [39], ethereal extract (EE) by AOAC 920.39 [40], nitrogen-free extract (NFE) by AOAC method 923.03 [41] and ash by AOAC method 942.05 [42,43]. Subsequently, one square meter per plot sample was obtained to conserve the leaf area as hay in the standing methodology. Under conservation with 0.2% urea, [44], yield and chemical composition were evaluated 25 days after protection.

In EXP-02, morphological characters were evaluated, and primary phenological data were assessed at the recommended time. Vegetation duration and grain filling period were analyzed by monitoring crop development weekly. Plant height was measured at maturity before grain harvest from the ground to the ear, including edges similar to the recommendations [4]. At the same time, ear

length, excluding edges, was examined. All measurements were performed on five plants from each of the 64 randomly selected experimental units. The number of grains per ear averaged 25 harvested and manually threshed ears. On the other hand, each plot was sampled in three square meter samples for each experimental unit to determine the total yield, grain yield, and straw yield.

### 2.5. Statistical analysis

The data from the two experiments were explored using normality tests (Shapiro-Wilks,  $p < 0.05$ ) and homogeneity of variances (Levene,  $p < 0.05$ ) for all the parameters under study. Then, to compare the discrete variables, a Kruskal-Wallis test ( $p < 0.05$ ) was applied, and for the continuous variables, the analysis of variance ( $p < 0.05$ ). For the comparison of the means of the treatments, the study factors, and their interaction between them, Tukey's test ( $p < 0.05$ ) was used. All analyses were performed with R software in RStudio (V. 2022.07.2 Build 576).

## 3. Results

### 3.1. Biomass and hay yield

Table 3 shows the values of plant numbers at 25 days to assess crop performance at post-germination, the number of tillers per plant at 54 days at the phenological stage of tillering and tiller initiation [45], plant height at cutting at 81 days; green fodder yield, dry matter, biomass and hay yield of the four rye ecotypes.

**Table 3.** Phenological and agronomic values and forage yield of four rye ecotypes.

Ecotype	Density <sup>1</sup> (Plants x m <sup>2</sup> )	Tillers <sup>#</sup> x plant	Plant height (cm)	Green Forage t ha <sup>-1</sup>	DM <sup>§</sup> (%)	Biomass (t DM ha <sup>-1</sup> )	Hay (t ha <sup>-1</sup> )
CBI-001	174	13	99.70	53.62	16.17	8.56	9.64
CCE-001	190	12	95.33	48.79	17.55	8.93	10.36
CJS-001	186	10.5	81.70	32.35	18.60	6.05	7.0
CSM-001	166	10	84.90	34.30	18.83	6.51	7.54
SE	9.82	0.625	3.67	3.40	0.52	0.48	0.55
<i>P value</i>	0.8301	0.6006	0.1486	0.2163	0.4605	0.1352	0.156

Notes: <sup>1</sup>: to 25 days; <sup>#</sup>: to 54 days; <sup>§</sup>: Dry Matter; SE: standard error; (no statistical differences between treatments; Kruskal-Wallis, Median,  $p < 0.05$ ).

### 3.2. Forage chemical composition

Table 4 shows crude protein values, neutral detergent fiber, acid detergent fiber, ethereal extract, nitrogen-free extract, and ash for the four local rye ecotypes. It should be noted that the values obtained are for green forage and hay.

**Table 4.** Chemical composition of green forage and forage preserved as hay, of the four rye ecotypes.

Ecotype	Crude protein (%)	NDF (%)	ADF (%)	Ether extract (%)	Nifex (%)	Ash (%)
Green forage						
CBI-001	10.15a	7.58a	48.83a	5.23c	48.20c	6.75b
CSM-001	9.02b	64.76c	40.51b	5.80a	50.83a	6.50b
CJS-001	9.80a	63.17d	38.51c	5.20c	49.84b	7.50a
CCE-001	9.89a	66.21b	41.24b	5.54b	48.15c	6.75b
SE	0.09	0.16	0.21	0.05	0.17	0.14
<i>P value</i>	<0.001	<0.001	<0.001	<0.001	<0.001	0.005
Forage in hay						
CBI-001	10.46b	68.49a	43.66a	4.00	42.59b	7.00b
CSM-001	10.37b	66.97a	40.26d	4.22	44.96a	7.00b
CJS-001	13.56a	64.31b	41.13c	4.03	43.03b	7.75a
CCE-001	9.45c	68.09a	42.23b	3.66	44.91a	7.50ab
SE	0.12	0.40	0.16	0.15	0.24	0.13
<i>P value</i>	<0.001	0.0002	<0.001	0.1168	0.0001	0.0057

NDF: Neutral Detergent Fibre; ADF: Acid Detergent Fibre; Nifex: Nitrogen-free extract; SE: Standard error.

Crude protein values for green rye forage ranged from 9.02 to 10.15 %, with CBI-001 higher than CSM-001 ( $P < 0.001$ ). However, when kept as hay, crude protein values increased from 9.45 for CCE-001 to 13.65%

### 3.3. Crop parameters grain production

Table 5 shows the results of agronomic characteristics such as stalk density per plant, number of flowering stalks per plant, length, ear length, number of grains per ear of the four forage rye ecotypes, and the fertilizer levels used in the study.

**Table 5.** Effect of fertilization levels and ecotypes on agronomic traits of forage rye.

Ecotype	Number of stems x plant	Flowering stems x plant	Length of stems (m)	Length of spikes (cm)	Grains per spike
CBI-001	4.56	4.06	1.18	10.80ab	45.63
CSM-001	4.94	4.25	1.15	11.34a	47.19
CJS-001	4.25	4.00	1.15	11.32a	47.75
CCE-001	4.38	4.06	1.18	10.17b	43.44
<i>P value</i>	0.440	0.913	0.525	0.001	0.087
Fertiliser levels					
T1	4.13	3.94	1.12b	11.36	47.75
T2	4.56	3.94	1.14b	10.71	44.63
T3	4.56	4.13	1.17ab	10.93	45.19
T4	4.88	4.38	1.22a	10.63	46.44
<i>P value</i>	0.414	0.592	0.005	0.100	0.317

T1: 60N-30P-20K; T2: 60N-60P-40K; T3: 60N-90P-60K; T4: 60N-120P-80K; Columns with different letters in each factor show differences (HSD Tukey,  $p < 0.05$ ).

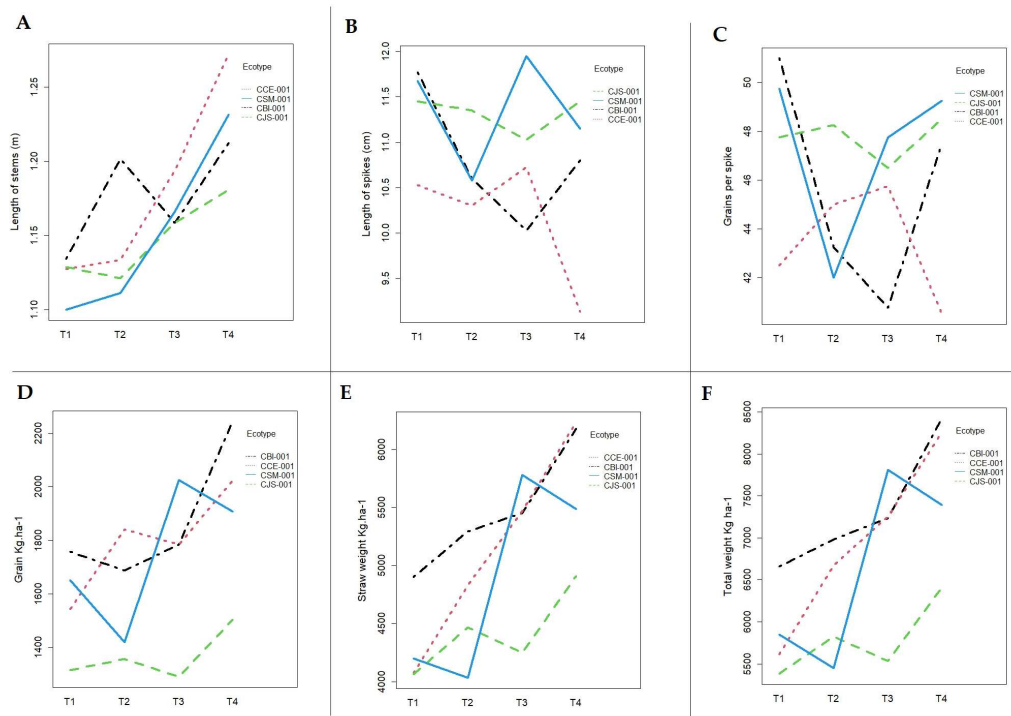
Table 6 shows the grain yield and straw yield of the crop of the four forage rye ecotypes, also the effect of fertilisation for these parameters. The ecotypes CBI-001, CCE-001 and CSM-001 perform best for grain or seed yield, and in general, T4 of the fertilisation levels achieves the highest grain weight.

**Table 6.** Effect of fertiliser levels and genotype on grain and straw yield of forage rye.

Ecotype	Total weight Kg ha <sup>-1</sup>	Grain Kg ha <sup>-1</sup>	Straw weight Kg ha <sup>-1</sup>
CBI-001	7325.00 a	1868.4a	5456.63a
CSM-001	6625.75 ab	1751.1a	4874.63ab
CJS-001	5787.50b	1365b	4422.50b
CCE-001	6948.50a	1797.8a	5150.75ab
<i>P value</i>	0.0072	0.00119	0.0263
Fertilizer levels			
T1	5875.9b	1565.9b	4310.00c
T2	6231.6b	1576.1b	4655.50bc
T3	6957.6ab	1720.4ab	5237.25ab
T4	7621.6a	1919.9a	5701.75a
<i>P value</i>	0.0010	0.0259	0.0008

T1: 60N-30P-20K; T2: 60N-60P-40K; T3: 60N-90P-60K; T4: 60N-120P-80K; Columns with different letters in each factor show differences (HSD Tukey,  $p < 0.05$ ).

In the interaction effect between the study factors considered in EXP-02, no significant differences were found ( $p < 0.05$ ) for all the parameters evaluated in agronomic characteristics and grain yield (Figure 2). The main effects were determined, and differences were found in both factors analyzed; This may be due to multiple environmental factors that can influence crop yield, even when they have been considered as controls in the experiments or by soil micro-elements, as referred by Klikocka et al. [20].



**Figure 2.** Interaction effect for rye ecotypes and four fertilizer levels. **A.** Length of stems (m); **B.** Spike length (cm); **C.** Number of grains per spike; **D.** Grain yield (kg ha<sup>-1</sup>); **E.** Straw or residual weight (kg ha<sup>-1</sup>); **F.** Total weight - grain plus straw (kg ha<sup>-1</sup>). T1: 60N-30P-20K; T2: 60N-60P-40K; T3: 60N-90P-60K; T4: 60N-120P-80K.

#### 4. Discussion

The green forage yield of rye evaluated with EXP-01 ranged from 6.51 t ha<sup>-1</sup> for CSM-001 to 8.93 t ha<sup>-1</sup> for CCE-001, being similar to that reported by Ates et al. [13], Galán et al. [22], Han et al. [46], and Ku et al. [47]. Likewise, the density of emerging plants at 25 days among the four genotypes had no significant differences ( $p=0.8301$ ) (Table 3), being lower values than the report of Blecharczyk et al. [34]; plant height ranged from 81 cm for CJS-001 to 99.70 cm for CBI-001. It was determined that forage yield retained as hay had no difference between the ecotypes. This yield could be because the agronomic performance of crops under dual-purpose management is mainly affected by the prevailing climatic conditions, especially by the growth stage of produce at harvest [13], because the area where EXP-01 was conducted, rainfall is permanent [8] at the time of forage harvest. Also, it does not impair the productivity of the genotypes studied, thus giving similar yields. Hay yield can also be affected by the time of cutting; in the present study, it was developed at 81 days and was conserved with a lower proportion of Urea, thus giving a yield with the same trend; the cultivars that had better results were CCE-001 and CBI-001 with 10.36 and 9.64 t ha<sup>-1</sup> respectively, it is known that advanced maturity influences hay yield and its quality [48].

Table 4 shows that the protein levels for green forage were 10.15% for CBI-001, similar to CJS-001 and CCE-001 ( $p<0.001$ ), demonstrating that higher protein values were obtained for hay conservation up to 13.56% for the CJS-001, showing as an ecotype with suitable characteristics for conservation as hay; this may be because the conservation conditions were carried out using a minimum level of urea to enrich the forage and reduce the loss of forage nutrients [44]. Likewise, differences were found ( $p<0.01$ ) between the four ecotypes for neutral detergent fiber (NDF), acid detergent fiber (ADF), ethereal extract (EE), nitrogen-free extract (NifEX), and ash for green forage. In contrast, for forage preserved in the hay, no differences were found for ethereal extract ( $p=0.1168$ ), with values even lower than those found for green forage; this may be due to the dehydration process to the green forage subjected. On the contrary, ash levels increase with the haymaking process, between 7.00% to 7.75%,



higher than the 5.8% reported by Wang et al. [49]. The crude protein levels, ADF and NDF, are similar to those written by Zhao et al. [48] under green forage and hay conditions. Due to the nutrients that rye forage has, and with the agro-climatic conditions of the high Andean zone of the northern highlands of Peru and in particular of Cajamarca, with acid soil conditions [2,3], in some cases poor in nutrients (Table 2, the possibility of installing and promoting the cultivation of rye is open, considering that it has forage and grain potential as a dual purpose in stressful environmental conditions [4]. Likewise, the ecotypes evaluated are from the high Andean zone; therefore, the genetic resource can be used to continue the process of genetic improvement, the evaluation of DNA and genes for tolerance to stress events and resistance of the cultivar [5], as well as for the biotechnological development of the cultivar [4] in the highlands at more than 3000 masl., where economic and social conditions are complicated.

In EXP-02, the effect of fertilization and the four rye ecotypes on grain yield parameters, straw, and agronomic characteristics, such as stalk length, number of stalks per plant, spike length, and number of grains per spike, were evaluated. Differences were determined for ear length ( $p=0.001$ ) among the ecotypes, superior CSM-001 and CJS-001 with 11.34 cm and 11.32 cm, respectively. On the other hand, the fertilization level factor with phosphorus and potassium as the main effect affected the length of the stems ( $p=0.005$ ) because these nutrients favor the development of the plant, as it is observed that T4 and T3 have higher values (Table 5). Although fertilization affects grain yield, especially when the doses of phosphorus are  $120 \text{ kg ha}^{-1}$  and potassium  $80 \text{ kg ha}^{-1}$ , according to Young [50], P fertilization does not influence the concentration of nutrients in cereal rye, this would indicate that to achieve higher production of grain. Straw should be applied up to  $90 \text{ kg ha}^{-1}$  of phosphorus and  $60 \text{ kg ha}^{-1}$  of potassium for soils with conditions similar to those shown in EXP-02 of Table 2. Table 6 shows that straw yield was evaluated because it is an essential by-product for cattle and sheep feeding during the dry season in this area; therefore, according to EXP-02, a higher straw biomass yield is achieved with a higher fertilizer application. It is also considered that rye with fertilization is more tolerant to wet years than dry years; this could be due to the excess moisture conditions could be the result of oxygen deficiency in the root zone of the crop [16], especially for the uptake of macronutrients, except for P content, taking into account that the interaction with N reduces the mass ratios of  $\text{K}^+:\text{Ca}^{2+}$ ,  $\text{K}^+:\text{Mg}^{2+}$  influencing the Ca: P ratio [20].

No interaction effect was found between fertilization levels and the four ecotypes studied in Figure 2A; for stem length, it is found that greater size was achieved with T4, and the ecotypes that had better performance and were affected by the level of  $\text{P}_2\text{O}_5$  and  $\text{K}_2\text{O}$  were CCE-001 and CSM-001, this showed that the size of the stems develops when the dose of fertilizer increases. A similar tendency is observed in the yield of grain and straw in Figure 2D and Figure 1E, respectively, with the ecotypes CCE-001 and CBI being the ecotypes that developed the best productive performance for grain and straw. There is no marked tendency for fertilization level for spike length and the number of grains per spike, as shown in Figure 2B and Figure 2C. Considering that the plant absorption efficiency was higher at higher phosphorus and potassium rates, responding to higher production, this indicates the use of the plant because the amount of nitrogen was stable, not generating interaction due to being a monoculture [26]. It has also been reported that the acceptable use of N in crops contributes to sustainable food production without degrading the environment [29], and the same is true for phosphorus and potassium since there can be a synergistic interaction between the nutrients for rye productivity. Therefore, it is explained that primary fertilization increases the grain's nutrient content compared to the plot without fertilization [19]. Finally, it can be mentioned that in both experiments, good results have been achieved as the four ecotypes have their productive particularities for forage yield, including their nutritional composition and grain yield demonstrating their high potential considering that the soil conditions where the experiments were developed are those prevailing in the northern highlands region; for the above mentioned it can be spoken that dual-purpose rye can represent a suitable alternative for biomass production in a variety of agroecological conditions, including areas where the cultivation of other cereal crops would not be competitive [2].

## 5. Conclusions

It was determined that the rye ecotype CBI-001 achieved the best green forage yield with 53.62 t ha<sup>-1</sup>; however, the CCE-001 achieved higher biomass content in dry matter and hay, being an outstanding ecotype for forage production. Differences were found between ecotypes for crude protein content, NDF, FDA, ether extract, nitrogen-free extract, and ash, both for green forage and for forage preserved as hay; protein levels increased in hayed forage up to 13.56% for CJS-001 because it was the ecotype with the lowest plant height at the time of cutting at 80 days. It was found that there were no main effects or interaction effects when different levels of phosphorus and potassium application were evaluated for the number of stems per plant, flowering stems per plant, and grains per ear. Likewise, it was determined that if there is a main effect for the ecotypes in grain and straw yield, being superior to the CBI-001 and CCE-001 (p=0.0072), the effect of fertilization gave better results when using 60 kg ha<sup>-1</sup> of nitrogen, 120 kg ha<sup>-1</sup> of P<sub>2</sub>O<sub>5</sub> and 80 kg ha<sup>-1</sup> of K<sub>2</sub>O; being very similar to the dose of 60 kg ha<sup>-1</sup> of nitrogen, 90 kg ha<sup>-1</sup> of P<sub>2</sub>O<sub>5</sub> and 60 kg ha<sup>-1</sup> of K<sub>2</sub>O. Finally, the ecotypes studied, especially the outstanding ones, can be installed and multiplied to use them as dual-purpose and animal feed, which is the limitation of inputs in the country's northern highlands.

**Author Contributions:** Conceptualization, W.L.C.C. and W.Y.A.-G.; methodology, W.L.C.C.; software, W.Y.A.-G.; validation, H.V.V., M.E.C.P. and W.L.C.C.; formal analysis, W.Y.A.-G.; investigation, W.L.C.C., M.E.C.P. and W.Y.A.-G.; resources, H.V.V. and C.Q.; data curation, W.Y.A.-G.; writing—original draft preparation, W.Y.A.-G.; writing—review and editing, W.Y.A.-G., W.L.C.C.; visualization, H.V.V. and Q.C.; supervision, W.L.C.C.; project administration, W.L.C.C.; funding acquisition, W.L.C.C., Q.C. and H.V.V. All authors have read and agreed to the published version of the manuscript.

**Funding:** This research was funded by Project "Mejoramiento de los servicios de investigación y transferencia tecnológica en el manejo y recuperación de suelos agrícolas degradados y aguas para riego en la pequeña y mediana agricultura en los departamentos de Lima, Ancash, San Martín, Cajamarca, Lambayeque, Junín, Ayacucho, Arequipa, Puno y Ucayali" of the Soil, Water and Foliar Laboratory-LABSAF (INIA), with CUI N° 2487112.

**Institutional Review Board Statement:** Not applicable.

**Informed Consent Statement:** Not applicable.

**Data Availability Statement:** The data supporting this study's findings are available from the corresponding author, W.Y.A.-G. and W.L.C.C., upon reasonable request.

**Acknowledgments:** In this section, we thank P. Mantilla-Rudas and Esther Cueva for field support and sample collection. To the students of Zootechnical Engineering of the National University of Cajamarca Fatima Guerra, Laura Mendoza, Marilu Vargas, Rinho Vasquez, and Jhardes Rodriguez for their support in the maintenance of the experiments and evaluation of indicators.

**Conflicts of Interest:** The authors declare no conflict of interest.

## References

1. Geiger, H.H.; Miedaner, T. Rye (*Secale cereale* L.) BT - Cereals; Springer US: New York, 2009; pp. 157–181. doi:10.1007/978-0-387-72297-9\_4.
2. Galán, R.J.; Bernal-Vasquez, A.M.; Jebsen, C.; Piepho, H.P.; Thorwarth, P.; Steffan, P.; Gordillo, A.; Miedaner, T. Early prediction of biomass in hybrid rye based on hyperspectral data surpasses genomic predictability in less-related breeding material. *Theoretical and Applied Genetics* **2021**, *134*, 1409–1422. doi:10.1007/s00122-021-03779-1.
3. Hyeon Jeong, J.; Joo Jung, W.; Weon Seo, Y. Genome-wide identification and expression analysis of the annexin gene family in rye (*Secale cereale* L.). *Gene* **2022**, *838*, 146704. doi:10.1016/j.gene.2022.146704.
4. Targonska-Karasek, M.; Boczkowska, M.; Podyma, W.; Pasnik, M.; Niedzielski, M.; Rucinska, A.; Nowak-Zyczynska, Z.; Rakoczy-Trojanowska, M. Multiplexed SSR and agronomic data used in an investigation of obsolete diversity of rye (*Secale cereale* L.). *Data in Brief* **2022**, *41*, 107910. doi:10.1016/j.dib.2022.107910.

5. Sun, Y.; Shen, E.; Hu, Y.; Wu, D.; Feng, Y.; Lao, S.; Dong, C.; Du, T.; Hua, W.; Ye, C.Y.; Zhu, J.; Zhu, Q.H.; Cai, D.; Skuza, L.; Qiu, J.; Fan, L. Population genomic analysis reveals domestication of cultivated rye from weedy rye. *Molecular Plant* **2022**, *15*, 552–561. doi:10.1016/J.MOLP.2021.12.015.
6. Bruckner, P.L.; Raymer, P.L.; Burton, G.W. Recurrent phenotypic selection for forage yield in rye. *Euphytica* **1991**, *54*, 11–17. doi:10.1007/BF00145625.
7. FAO. Crops and livestock products, 2022.
8. SENAMHI, S.N.d.M.e.H.d.P. Monitoreo Agroclimático a nivel nacional, 2022.
9. Korzun, V.; Ponomareva, M.L.; Sorrells, M.E. Economic and Academic Importance of Rye. In *The rye genome*; Rabanus-Wallace, M.T.; Stein, N., Eds.; Springer US: Germany, 2021; chapter 1, pp. 1–12. doi:https://doi.org/10.1007/978-3-030-83383-1.
10. Németh, R.; Tömösközi, S. Rye: Current state and future trends in research and applications. *Acta Alimentaria* **2021**, *50*, 620–640. doi:10.1556/066.2021.00162.
11. Kaur, P.; Singh Sandhu, K.; Singh Purewal, S.; Kaur, M.; Kumar Singh, S. Rye: A wonder crop with industrially important macromolecules and health benefits. *Food Research International* **2021**, *150*, 110769. doi:10.1016/j.foodres.2021.110769.
12. Kim, K.S.; Anderson, J.D.; Webb, S.L.; Newell, M.A.; Butler, T.J. Variation in winter forage production of four small grain species - Oat, rye, triticale, and wheat. *Pakistan Journal of Botany* **2017**, *49*, 553–559.
13. Ates, S.; Keles, G.; Demirci, U.; Dogan, S.; Ben Salem, H. Biomass yield and feeding value of rye, triticale, and wheat straw produced under a dual-purpose management system. *Journal of Animal Science* **2017**, *95*, 4893. doi:10.2527/jas2017.1888.
14. Daly, E.J.; Hernandez-Ramirez, G.; Puurveen, D.; Ducholke, C.; Kim, K.; Oatway, L. Perennial rye as a grain crop in Alberta, Canada: Prospects and challenges. *Agronomy Journal* **2022**, *114*, 471–489. doi:10.1002/agj2.20965.
15. Sukhoveeva, O.E. Analyzing the impact of agrometeorological factors on winter rye yield in the Central Non-Black Soil zone. *Russian Meteorology and Hydrology* **2014**, *39*, 762–767. doi:10.3103/S1068373914110065.
16. Márton, L. Precipitation and fertilization level impacts on winter rye (*Secale cereale* L.) yield. *Cereal Research Communications* **2007**, *35*, 1509–1517. doi:10.1556/CRC.35.2007.3.15.
17. Ouk-Kyu, H.; Jong-Jin, H.; Hyeong-Ho, P.; Tae-Il, P.; Ja-Hwan, K.; Young-Up, K.; Soon-Jong, K.; Kwang-Geun, P. Forage rye cultivars for animal feed in Korea. The XXIII International Grassland Congress (Sustainable use of Grassland Resources for Forage Production, Biodiversity and Environmental Protection) took place in New Delhi, India from November 20 through November 24, 2015., 2015, p. 2.
18. Vaughn, K.; Adeyemi, O.; Zandvakili, O.; Hunter, D.; Nair, J.; Still, S.; Sadeghpour, A. Winter rye cover crop biomass, nutrient uptake, and quality in response to fall and spring N fertilization. *Cogent Food & Agriculture* **2022**, *8*, 2132843. doi:10.1080/23311932.2022.2132843.
19. Stepień, A.; Wojtkowiak, K.; Pietruszewicz, M.; Skłodowski, M.; Pietrzak-Fiećko, R. The yield and grain quality of winter rye (*Secale cereale* L.) under the conditions of foliar fertilization with micronutrients (Cu, Zn and Mn). *Polish Journal of Natural Sciences* **2016**, *31*, 33–46.
20. Klikocka, H.; Podleśna, A.; Klikocka, H.; Skwaryło-Bednarz, B.; Narolski, B. The response of spring rye (*Secale cereale* L.) to NPK and S fertilizers. The content and uptake of macroelements and the value of ionic ratios. *Journal of Elementology* **2022**. doi:10.5601/jelem.2022.27.1.2257.
21. Wyzińska, M.; Grabiński, J. Economic efficiency of different winter rye production technologies. *Annals of the Polish Association of Agricultural and Agribusiness Economists* **2021**, *XXIII*, 201–208. doi:10.5604/01.3001.0015.5918.
22. Galán, R.J.; Bernal-Vasquez, A.M.; Jebson, C.; Piepho, H.P.; Thorwarth, P.; Steffan, P.; Gordillo, A.; Miedaner, T. Hyperspectral Reflectance Data and Agronomic Traits Can Predict Biomass Yield in Winter Rye Hybrids. *BioEnergy Research* **2020**, *13*, 168–182. doi:10.1007/s12155-019-10080-z.
23. Ning, J.; Lou, S.; Guo, Y.; Chang, S.; Zhang, C.; Zhu, W.; Hou, F. Appropriate N fertilizer addition mitigates N<sub>2</sub>O emissions from forage crop fields. *Science of the Total Environment* **2022**, *829*, 154628. doi:10.1016/j.scitotenv.2022.154628.
24. Moitzi, G.; Neugschwandtner, R.W.; Kaul, H.p.; Wagentristl, H. Energy Efficiency of Continuous Rye , Rotational Rye and Barley in Different Fertilization Systems in a Long-Term Field Experiment. *Agronomy Journal* **2021**, *11*, 1–14. doi:10.3390/agronomy11020229.

25. Drăghici, R.; Drăghici, I.; Croitoru, M.; Diaconu, A.; Dima, M.; Badi, O.C. Improving the productivity and quality of rye production, by applying foliar fertilizers with a high content of microelements, in sandy soil conditions. *Scientific Papers. Series A. Agronomy* **2022**, *LXV*, 304–311.
26. Pantoja, J.L.; Woli, K.P.; Sawyer, J.E.; Barker, D.W. Corn Nitrogen Fertilization Requirement and Corn-Soybean Productivity with a Rye Cover Crop. *Soil Science Society of America Journal* **2015**, *79*, 1482–1495. doi:10.2136/sssaj2015.02.0084.
27. Binder, J. Cereal Rye and Manure Management to Increase Nutrient Utilization in Pennsylvania Dairy Farms. Master of science, The Pennsylvania State University, 2019.
28. Thapa, R.; Poffenbarger, H.; Tully, K.L.; Ackroyd, V.J.; Kramer, M.; Mirsky, S.B. Biomass Production and Nitrogen Accumulation by Hairy Vetch–Cereal Rye Mixtures: A Meta-Analysis. *Agronomy Journal* **2018**, *110*, 1197–1208. doi:10.2134/agronj2017.09.0544.
29. Malone, R.W.; O'Brien, P.L.; Herbstritt, S.; Emmett, B.D.; Karlen, D.L.; Kaspar, T.C.; Kohler, K.; Radke, A.; Lence, S.H.; Wu, H.; Richard, T.L. Rye-soybean double-crop: planting method and N fertilization effects in the North Central US. *Renewable Agriculture and Food Systems* **2022**, *37*, 445–456. doi:10.1017/S1742170522000096.
30. Pantoja, J.L.; Woli, K.P.; Sawyer, J.E.; Barker, D.W. Winter rye cover crop biomass production, degradation, and nitrogen recycling. *Agronomy Journal* **2016**, *108*, 841–853. doi:10.2134/agronj2015.0336.
31. EPA. SW-846 Test Method 9045D: Soil and Waste pH, 2004.
32. SEMARNAT. Norma Oficial Mexicana NOM-021-REC/NAT-2000, Que establece las especificaciones de fertilidad, salinidad y clasificación de suelos. Estudios, muestreo y análisis. Technical report, Secretaría de Medio Ambiente y Recursos Naturales., Ciudad de México, 2002.
33. Olego, M.Á.; Quiroga, M.J.; Mendaña-Cuervo, C.; Cara-Jiménez, J.; López, R.; Garzón-Jimeno, E. Long-Term Effects of Calcium-Based Liming Materials on Soil Fertility Sustainability and Rye Production as Soil Quality Indicators on a Typic Palexerult. *Processes* **2021**, *9*, 1181. doi:10.3390/pr9071181.
34. Bleharczyk, A.; Sawinska, Z.; Małecka, I.; Sparks, T.H.; Tryjanowski, P. The phenology of winter rye in Poland: an analysis of long-term experimental data. *International Journal of Biometeorology* **2016**, *60*, 1341–1346. doi:10.1007/s00484-015-1127-2.
35. AOAC. Moisture in Animal Feed, Method 930.15. In *Official Methods of Analysis of AOAC International*, 16 ed.; 1996; chapter Moisture i.
36. AOAC. Método 928.08 – “Kjeldahl method”. In *Official Methods of Analysis of AOAC International*, 19 ed.; Latimer, G.W., Ed.; 2012; chapter 39, pp. p. 5, (39.1.15).
37. Van Soest, P.J.; Robertson, J.B.; Lewis, B.A. Methods for Dietary Fiber, Neutral Detergent Fiber, and Nonstarch Polysaccharides in Relation to Animal Nutrition. *Journal of Dairy Science* **1991**, *74*, 3583–3597. doi:10.3168/jds.S0022-0302(91)78551-2.
38. AOAC. Official methods of analysis Neutral Detergent Fiber (NDF) Calculation: NDF = cellulose + lignin + hemicellulose - item 90. In *Association of Analytical Communities*, 17 ed.; 2006.
39. AOAC. Official methods of analysis Acid Detergent Fiber (ADF) Calculation: ADF = cellulose plus lignin - item 89. In *Association of Analytical Communities*, 17 ed.; 2006.
40. AOAC. Fat (crude) or Ether Extract in Animal Feed. AOAC Method 920.39. In *Official Methods of Analysis of AOAC International*, 15 ed.; 1990; p. 79.
41. AOAC. Official methods of analysis Available Carbohydrates Calculation: 100 percent minus percent (CP + Ash + Crude Fat + M + Crude Fiber) - item 86. In *Association of Analytical Communities*, 17 ed.; 2006.
42. AOAC. Ash of Animal Feed. AOAC Official Methods 942.05. *Journal of AOAC International* **2000**, *857*, 2000.
43. Thiex, N.; Novotny, L.; Crawford, A. Determination of ash in animal feed: AOAC official method 942.05 revisited. *Journal of AOAC International* **2012**, *95*, 1392–7.
44. Killerby, M.A.; Reyes, D.C.; White, R.; Romero, J.J. Meta-analysis of the effects of chemical and microbial preservatives on hay spoilage during storage. *Journal of Animal Science* **2022**, *100*, skac023. doi:10.1093/jas/skac023.
45. Tottman, D.R.; Makepeace, R.J.; Broad, H. An explanation of the decimal code for the growth stages of cereals, with illustrations. *Annals of Applied Biology* **1979**, *93*, 221–234. doi:10.1111/j.1744-7348.1979.tb06534.x.
46. Han, O.k.; Hwang, J.j.; Park, H.h.; Park, T.i.; Ku, J.h.; Kwon, Y.u.; Kwoen, S.j.; Park, K.g. Forage Rye Cultivars for Animal Feed in Korea. The XXIII International Grassland Congress (Sustainable use of Grassland Resources for Forage Production, Biodiversity and Environmental Protection) took place in New Delhi, India from November 20 through November 24, 2015.; of India, R.M.S., Ed., 2015, p. 4.

47. Ku, J.h.; Han, O.k.; Oh, Y.j.; Park, T.i.; Kim, D.w.; Kim, B.j.; Park, M.R.; Ra, K.y. An Early-Maturing and High-Biomass Tetraploid Rye ( *Secale cereale* L. ) Variety 'Daegokgreen' for Forage Use. *Journal of the Korean Society of Grassland and Forage Science* **2020**, *40*, 209–215.
48. Zhao, G.Q.; Wei, S.N.; Liu, C.; Kim, H.J.; Kim, J.G. Effect of harvest dates on  $\beta$ -carotene content and forage quality of rye (*Secale cereale* L.) silage and hay. *Journal of Animal Science and Technology* **2021**, *63*, 354–366. doi:10.5187/JAST.2021.E28.
49. Wang, L.; Skreiberg, Ø.; Becidan, M.; Li, H. Investigation of rye straw ash sintering characteristics and the effect of additives. *Applied Energy* **2016**, *162*, 1195–1204. doi:10.1016/j.apenergy.2015.05.027.
50. Young, T.A. Macronutrient Content of Winter Annual Cereal Grains with Phosphorus Fertilization. Master thesis, Missouri State University, 2019.

**Disclaimer/Publisher's Note:** The statements, opinions and data contained in all publications are solely those of the individual author(s) and contributor(s) and not of MDPI and/or the editor(s). MDPI and/or the editor(s) disclaim responsibility for any injury to people or property resulting from any ideas, methods, instructions or products referred to in the content.